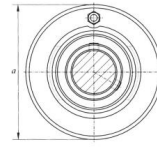
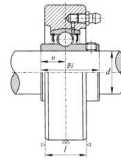


UCC200 Series



select	Inquiry	Bearing Unit No.	Shaft Dia(mm)		Dimensions [mm]				Bearing Housing No.	Weight(kg)
			in	mm	a	l	Bi	n		
UCC201		12	72	20	31	12.7	UC201	C201	0.5	
UCC201-8	1/2	12	72	20	31	12.7	UC201-8	C201	0.5	
UCC202		15	72	20	31	12.7	UC202	C202	0.5	
UCC202-10	5/8	15	72	20	31	12.7	UC202-10	C202	0.5	
UCC203		17	72	20	31	12.7	UC203	C203	0.5	
UCC203-11	1 1/16	17	72	20	31	12.7	UC203-11	C203	0.5	
UCC204-12	3/4	20	72	20	31	12.7	UC204-12	C204	0.5	
UCC204		20	72	20	31	12.7	UCC204	C204	0.5	
UCC205-14	7/8	25	80	22	34	14.3	UC205-14	C205	0.64	
UCC205-15	1 5/16	25	80	22	34	14.3	UC205-15	C205	0.64	
UCC205		25	80	22	34	14.3	UC205	C205	0.64	
UCC205-16	1	25	80	22	34	14.3	UC205-16	C205	0.64	
UCC206-18	1 1/8	30	85	27	38.1	15.9	UC206-18	C206	0.81	
UCC206		30	85	27	38.1	15.9	UC206	C206	0.81	
UCC206-19	1 3/16	30	85	27	38.1	15.9	UC206-19	C206	0.81	
UCC206-20	1 1/4	30	85	27	38.1	15.9	UC206-20	C206	0.81	
UCC207-20	1 1/4	35	90	28	42.9	17.5	UC207-20	C207	0.93	
UCC207-21	1 5/16	35	90	28	42.9	17.5	UC207-21	C207	0.93	
UCC207-22	1 3/8	35	90	28	42.9	17.5	UC207-22	C207	0.93	
UCC207		UC	90	28	42.9	17.5	UC207	C207	0.93	
UCC207-23	1 7/16	35	90	28	42.9	17.5	UC207-23	C207	0.93	
UCC208-24	1 1/2	40	100	30	49.2	19	UC208-24	C208	1.2	

UCC200 Series

UCC208-25	$\frac{1}{9/16}$	40	100	30	49.2	19	UC208-25	C208	1.2
UCC208		40	100	30	49.2	19	UC208	C208	1.2
UCC209-26	$1 \frac{5}{8}$	45	110	31	49.2	19	UC209-26	C209	1.5
UCC209-27	$\frac{1}{11/16}$	45	110	31	49.2	19	UC209-27	C209	1.5
UCC209-28	$1 \frac{3}{4}$	45	110	31	49.2	19	UC209-28	C209	1.5
UCC209		45	110	31	49.2	19	UC209	C209	1.5
UCC210-30	$1 \frac{7}{8}$	50	120	33	51.6	19	UC210-30	C210	2
UCC210-31	$\frac{1}{15/16}$	50	120	33	51.6	19	UC210-31	C210	2