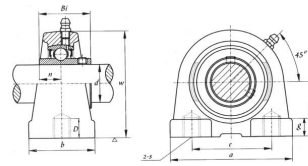


UCPA200 Series



select	Inquiry	Bearing Unit No.	Shaft Dia(mm)		Dimensions[mm]										Bolt Dimensions mm	Bearing Housing No.	Weight(kg)
			in	mm	h	a	e	b	s	g	w	D	Bi	n			
UCPA201		12	30.2	76	52	40	10	11	62	13	31	12.7	M10	UCPA201	PA201	0.56	
UCPA201-8	1/2	12	30.2	76	52	40	10	11	62	13	31	12.7	M10	UCPA201-8	PA201	0.56	
UCPA202		15	30.2	76	52	40	10	11	62	13	31	12.7	M10	UCPA202	PA202	0.54	
UCPA202-10	5/8	15	30.2	76	52	40	10	11	62	13	31	12.7	M10	UCPA202-10	PA202	0.54	
UCPA203		17	30.2	76	52	40	10	11	62	13	31	12.7	M10	UCPA203	PA203	0.53	
UCPA203-11	11/16	17	30.2	76	52	40	10	11	62	13	31	12.7	M10	UCPA203-11	PA203	0.53	
UCPA204-12	3/4	20	30.2	76	52	40	10	11	62	13	31	12.7	M10	UCPA204-12	PA204	0.51	
UCPA204		20	30.2	76	52	40	10	11	62	13	31	12.7	M10	UCPA204	PA204	0.51	
UCPA205-14	7/8	25	36.5	84	56	45	10	12	72	13	34	14.3	M10	UCPA205-14	PA205	0.68	
UCPA205-15	15/16	25	36.5	84	56	45	10	12	72	13	34	14.3	M10	UCPA205-15	PA205	0.68	
UCPA205		25	36.5	84	56	45	10	12	72	13	34	14.3	M10	UCPA205	PA205	0.68	
UCPA205-16	1	25	36.5	84	56	45	10	12	72	13	34	14.3	M10	UCPA205-16	PA205	0.68	
UCPA206-18	1 1/8	30	42.9	94	66	50	14	12	84	18	38.1	15.9	M14	UCPA206-18	PA206	0.99	
UCPA206		30	42.9	94	66	50	14	12	84	18	38.1	15.9	M14	UCPA206	PA206	0.99	
UCPA206-19	1 3/16	30	42.9	94	66	50	14	12	84	18	38.1	15.9	M14	UCPA206-19	PA206	0.99	
UCPA207-20	1 1/4	35	47.6	110	80	55	14	13	95	20	42.9	17.5	M14	UCPA207-20	PA207	1.42	
UCPA207-21	1 5/16	35	47.6	110	80	55	14	13	95	20	42.9	17.5	M14	UCPA207-21	PA207	1.42	
UCPA207-22	1 3/8	35	47.6	110	80	55	14	13	95	20	42.9	17.5	M14	UCPA207-22	PA207	1.42	
UCPA207		35	47.6	110	80	55	14	13	95	20	42.9	17.5	M14	UCPA207	PA207	1.42	
UCPA207-23	1 7/16	35	47.6	110	80	55	14	13	95	20	42.9	17.5	M14	UCPA207-23	PA207	1.42	
UCPA208-24	1 1/2	40	49.2	116	84	58	14	13	100	20	49.2	19	M14	UCPA208-24	PA208	1.64	
UCPA208-25	1 9/16	40	49.2	116	84	58	14	13	100	20	49.2	19	M14	UCPA208-25	PA208	1.64	
UCPA208		40	49.2	116	84	58	14	13	100	20	49.2	19	M14	UCPA208	PA208	1.64	
UCPA209-26	1 5/8	45	54.2	120	90	60	14	13	100	25	49.2	19	M14	UCPA209-26	PA209	1.8	
UCPA209-27	1 11/16	45	54.2	120	90	60	14	13	100	25	49.2	19	M14	UCPA209-27	PA209	1.8	
UCPA209-28	1 3/4	45	54.2	120	90	60	14	13	100	25	49.2	19	M14	UCPA209-28	PA209	1.8	
UCPA209		45	54.2	120	90	60	14	13	100	25	49.2	19	M14	UCPA209	PA209	1.8	
UCPA210-30	1 7/8	50	57.5	130	94	64	16	14	116	25	51.6	19	M16	UCPA210-30	PA210	2.23	
UCPA210-31	1 15/16	50	57.5	130	94	64	16	14	116	25	51.6	19	M16	UCPA210-31	PA210	2.23	
UCPA210		50	57.5	130	94	64	16	14	116	25	51.6	19	M16	UCPA210	PA210	2.23	