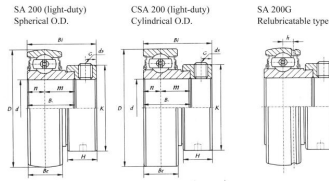
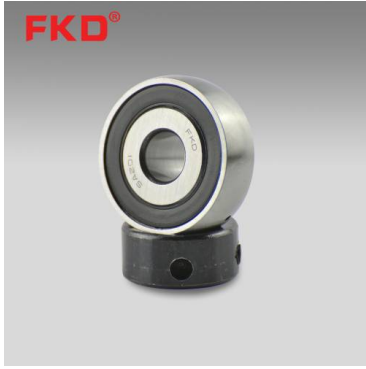


SA 系列



select	Inquiry	轴承 型号	d		尺寸□mm□													基本额定 载荷(N)		重 量(kg)
			in	mm	Be	D	B1	n	m	Bi	K	H	G	h	ds	Cr	Cor			
SA201		12	12	40	19.1	6	13.1	28.6	28.6	13.5	5	3.6	M6X1.0	9600	4600	0.13				
SA201-8	1/2	12	12	40	19.1	6	13.1	28.6	28.6	13.5	5	3.6	M6X1.0	9600	4600	0.13				
SA202		15	12	40	19.1	6	13.1	28.6	28.6	13.5	5	3.6	M6X1.0	9600	4600	0.12				
SA202-10	5/8	15	12	40	19.1	6	13.1	28.6	28.6	13.5	5	3.6	M6X1.0	9600	4600	0.12				
SA203		17	12	40	19.1	6	13.1	28.6	28.6	13.5	5	3.6	M6X1.0	9600	4600	0.1				
SA203-11	11/16	17	12	40	19.1	6	13.1	28.6	28.6	13.5	5	3.6	M6X1.0	9600	4600	0.1				
SA204-12	3/4	20	14	47	21.5	7.5	14.5	31	33.3	13.5	5	4	M6X1.0	12800	6650	0.16				
SA204		20	14	47	21.5	7.5	14.5	31	33.3	13.5	5	4	M6X1.0	12800	6650	0.16				
SA205-14	7/8	25	15	52	21.5	7.5	14	31	38.1	13.5	5	4.3	M6X1.0	14000	7880	0.19				
SA205		25	15	52	21.5	7.5	14	31	38.1	13.5	5	4.3	M6X1.0	14000	7880	0.19				
SA205-16	1	25	15	52	21.5	7.5	14	31	38.1	13.5	5	4.3	M6X1.0	14000	7880	0.19				
SA206-18	1 1/8	30	16	62	23.8	9	14.8	35.7	44.5	15.9	6	5	M8X1.0	19500	11200	0.3				
SA206		30	16	62	23.8	9	14.8	35.7	44.5	15.9	6	5	M8X1.0	19500	11200	0.3				
SA206-19	1 3/16	30	16	62	23.8	9	14.8	35.7	44.5	15.9	6	5	M8X1.0	19500	11200	0.3				
SA206-20	1 1/4	30	16	62	23.8	9	14.8	35.7	44.5	15.9	6	5	M8X1.0	19500	11200	0.3				
SA207-20	1 1/4	35	17	72	25.4	9.5	15.9	38.9	55.6	17.5	6.5	5.7	M8X1.0	25700	15200	0.45				
SA207-22		35	17	72	25.4	9.5	15.9	38.9	55.6	17.5	6.5	5.7	M8X1.0	25700	15200	0.45				
SA207	1 3/8	35	17	72	25.4	9.5	15.9	38.9	55.6	17.5	6.5	5.7	M8X1.0	25700	15200	0.45				
SA207-23	1 7/16	35	17	72	25.4	9.5	15.9	38.9	55.6	17.5	6.5	5.7	M8X1.0	25700	15200	0.45				
SA208-24	1 1/2	40	18	80	30.2	11	19.2	43.7	60.3	18.3	6.5	6.2	M8X1.0	29600	18200	0.6				
SA208-25	1 9/16	40	18	80	30.2	11	19.2	43.7	60.3	18.3	6.5	6.2	M8X1.0	29600	18200	0.6				

SA 系列

SA208		40	18	80	30. 2	11	19.2	43.7	60.3	18.3	6. 5	6.2	M8X1. 0	29600	18200	0.6
SA209-26	1 5/8	45	19	85	30.2	11	19.2	43.7	63.5	18.3	6.5	6.8	M8X1.0	31850	20800	0.64
SA209-27	1 11/16	45	19	85	30.2	11	19.2	43.7	63.5	18.3	6.5	6.8	M8X1.0	31850	20800	0.64
SA209		45	19	85	30.2	11	19.2	43.7	63.5	18.3	6.5	6.8	M8X1.0	31850	20800	0.64
SA209-28	1 3/4	45	19	85	30.2	11	19.2	43.7	63.5	18.3	6.5	6.8	M8X1.0	31850	20800	0.64
SA210-30	1 7/8	50	20	90	30.2	11	19.2	43.7	69.9	18.3	6.5	6.5	M8X1. 0	35100	23200	0.71
SA210-31	1 15/16	50	20	90	30.2	11	19.2	43.7	69.9	18.3	6.5	6.5	M8X1. 0	35100	23200	0.71
SA210		50	20	90	30.2	11	19.2	43.7	69.9	18.3	6.5	6.5	M8X1. 0	35100	23200	0.71
SA211-32	2	55	21	100	32.5	12	20.5	48.4	76.2	20.7	8	7.2	M10X1. 0	43550	29200	0.87