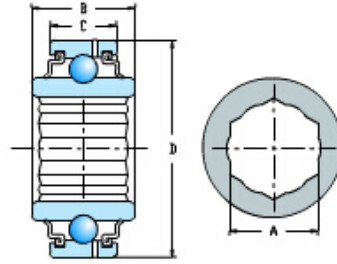
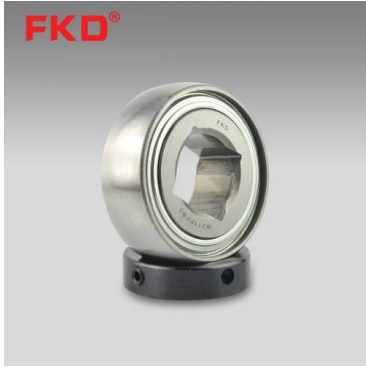


# Square Bore And Cylindrical O.D



select	Inquiry	轴承型号	尺寸□mm□				基本额定载荷 (kN) 重量	
			d	D	Bi	Be	Cr	(Kg)
GW211PP3	1-1/2	100	1.311	1.311	39100	1.27		
W208PP5	1-1/8	80	1.437	0.709	26200	0.68		
W208PP6	1-1/8	80	1.437	0.709	26200	0.73		
W208PP8	1-1/8	80	1.437	1.189	26200	0.75		
W210PP4	1-1/8	90	1.189	1.189	31500	0.87		
W211PP3	1-1/2	100	1.311	1.311	39100	1.27		
W211PP5	1-1/2	101.6	1.75	1.437	39100	1.8		